



## FEATURES

- ▼ Corrosion resistant copper free aluminum housing with a white oven-cured polyester powder coat high gloss protective finish.
- ▼ Twin 8w T5 fluorescent lamps.
- ▼ Emergency versions available.
- ▼ Available in a range of mounting types such as surface, flush or pendant.
- ▼ Choice of vertical or horizontal lettering.
- ▼ Double sided lettering is standard.
- ▼ 5 year warranty.

## APPROVALS

- ▼ ABS
- ▼ Conforms to IP 40

## APPLICATIONS

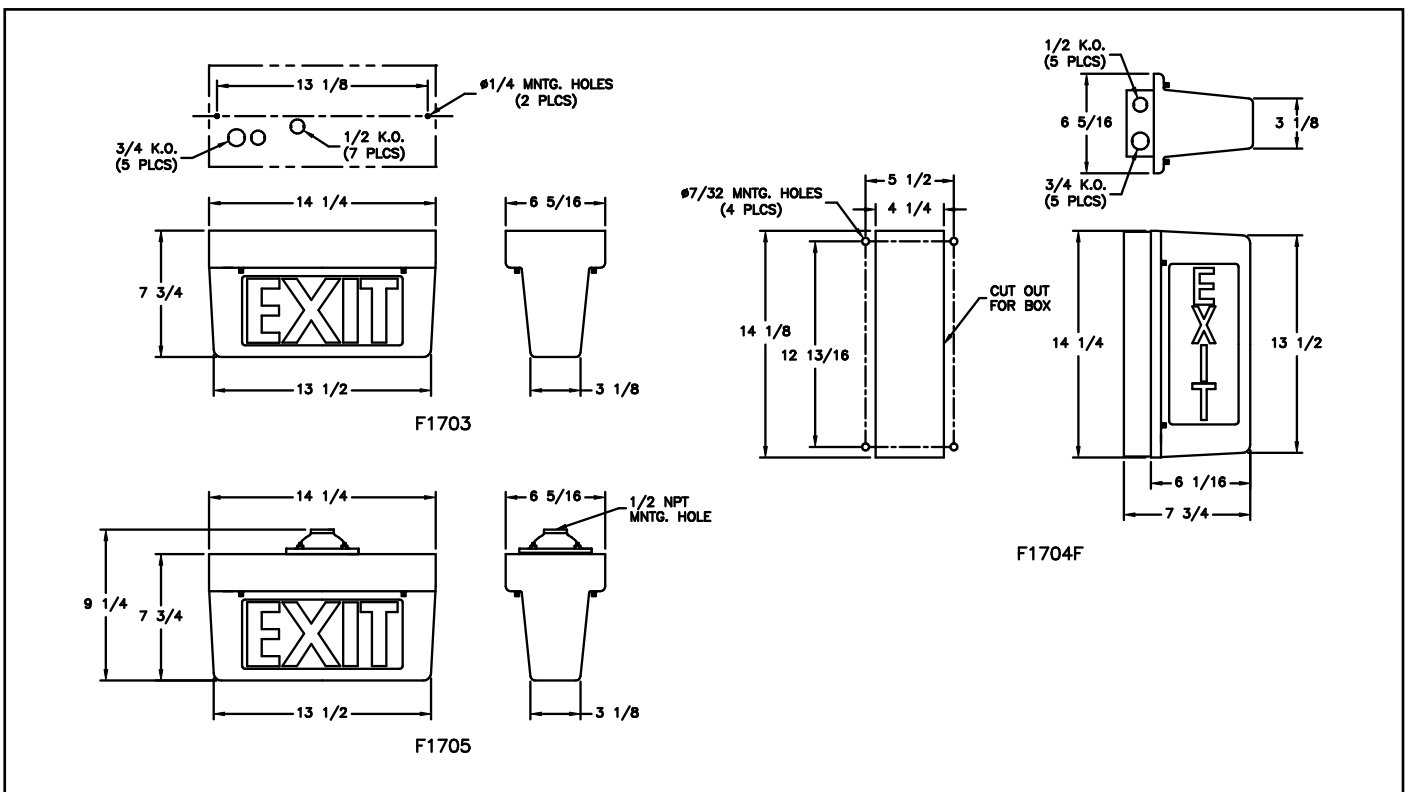
- ▼ Offshore oil and gas platforms
- ▼ Drill ships and exploration vessels
- ▼ Tankers and cargo ships
- ▼ Ferries
- ▼ Commercial vessels

## OPTIONS

To obtain a luminaire with any of the options listed below, please add the following suffix to the part number (not all options can be combined):

- |                     |      |
|---------------------|------|
| ▼ Emergency Ballast | EM   |
| ▼ 220v 50Hz         | -225 |
| ▼ 220v 60Hz         | -226 |
| ▼ 270v 60Hz         | -276 |

## DIMENSIONS



**LUMINAIRE TECHNICAL SPECIFICATIONS**

**HOUSING**

Corrosion resistant copper free aluminum with a white oven-cured polyester powder coat protective finish.

**REFLECTOR**

Aluminum with a white high gloss polyester powder coat finish.

**OUTLETS**

All units are supplied with a 1/2" and a 3/4" NPT knockout.

**MOUNTING**

Available in a surface, flush or pendant mount. Pendant mount luminaires are not available with vertical lettering.

**BALLAST**

Supplied with a 120v AC 60Hz ballast. Other options include 220v 60Hz, 220v 50Hz or 277v 60Hz.

**LAMP TYPE**

All luminaires are supplied with two cool white T5 8w lamps as standard.

**DIFFUSER**

Double sided red lettering against a translucent background is standard. Available in horizontal or vertical lettering versions.

**ORDERING REFERENCES**

**FLUORESCENT EXIT SIGN LUMINAIRES**

DESCRIPTION TYPE	WEIGHT	SURFACE MOUNT TYPE	FLUSH MOUNT TYPE	PENDANT MOUNT
Horizontal Lettering Luminaire	5.5 lbs	F1703	F1703F	F1705
Vertical Lettering Luminaire	5.5 lbs	F1704	F1704F	Not Available

**SPARE PARTS**

<b>LAMPHOLDER</b>	FX4000	<b>BALLASTS 120V AC 60HZ LPF</b> 2 Required	FX5012	<b>LENS</b> Horizontal 'EXIT' Vertical 'EXIT' Down Light	FX2073 FX2074 FX2072
<b>LAMP</b> 8w T5 Cool White Fluorescent	FX3509				