



### FEATURES

- ▼ Corrosion resistant housing in copper free aluminum with an oven-cured polyester powder coat protective finish.
- ▼ Housing includes integral support tabs to allow for suspension from the ceiling.
- ▼ Available in 35 & 60 watt high lumen output versions.
- ▼ Wide choice of lamp options 17w, 20w, 24w, 32w, 35w, 40w, 54w and 60w available in two, three or four lamp versions.
- ▼ 120v 60Hz voltage operation as standard with other options available.
- ▼ Twist locking lampholders for bipin lamps and spring loaded lampholders for HO lamps provide resistance to shock and vibration.
- ▼ Red Filter Tube option allows for red filter to be operated on a separate circuit for darken ship mode.
- ▼ Three and four lamp models are provided with 2 ballast for independent switching or color effects.
- ▼ Equipped with a 2 pole terminal block located on an access plate for ease of installation.
- ▼ 5 year warranty.

### APPROVALS

- ▼ UL 1598A - Marine Inside Drip Proof Type
- ▼ UL 924 - Emergency Lighting Equipment
- ▼ ABS
- ▼ Conforms to IP 52

### APPLICATIONS

- ▼ Marine and wet environments
- ▼ Offshore oil and gas platforms
- ▼ Drill ships and exploration vessels
- ▼ Tankers
- ▼ Corridor and amenity lighting

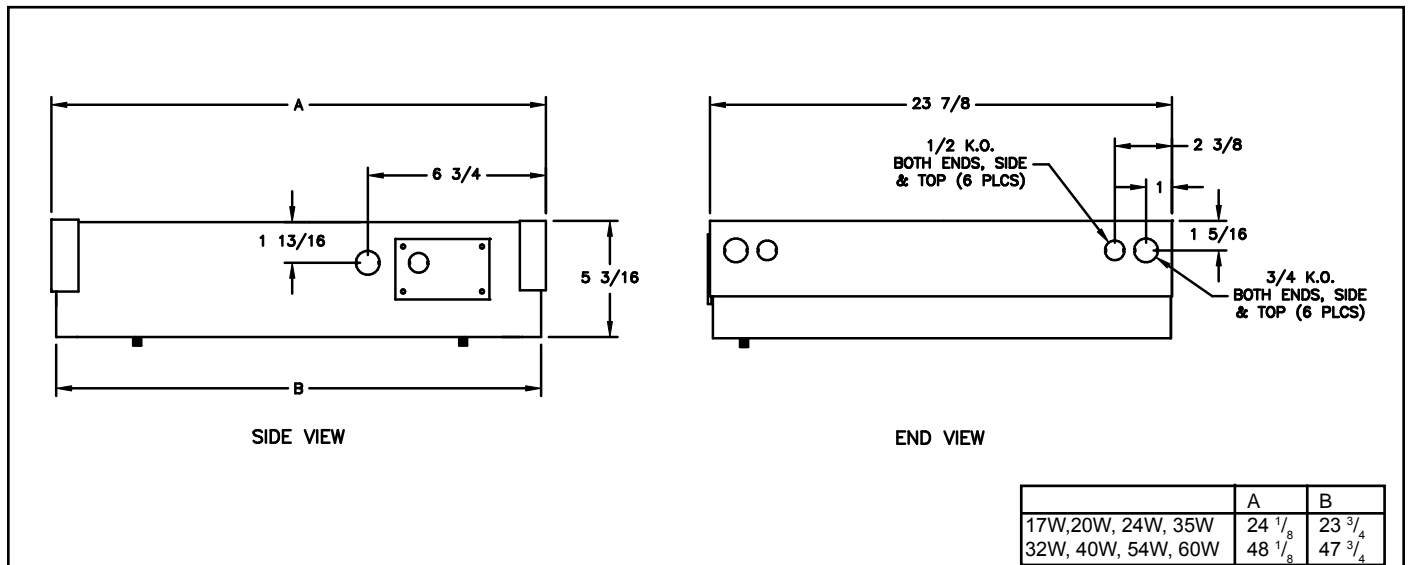
### OPTIONS

To obtain a luminaire with any of the options listed below, please add the following suffix to the part number (not all options can be combined):

- |  |       |
|--|-------|
| ▼ Emergency ballast (1 lamp)                 | EM    |
| ▼ Low Temperature Ballast (20w and 40w)      | ODEG  |
| ▼ Dimmer for 17w, 32w and 40w (120V only)    | DIM   |
| ▼ Red Filter Tube (1 Lamp)                   | RV-1* |
| ▼ Red Filter Tube (all Lamps)                | RV*   |
| ▼ Blue Filter Tube (1 Lamp)                  | BV-1* |
| ▼ Blue Filter Tube (all Lamps)               | BV*   |
| ▼ 120-277 50/60Hz (17, 24, 32, 35, 54 & 60w) | -127  |
| ▼ 220V 50Hz Ballast                          | -225  |
| ▼ 220V 60Hz Ballast                          | -226  |
| ▼ 277V 60Hz Ballast                          | -276  |

\* Not available in 24w or 54w.

### DIMENSIONS





**LUMINAIRE TECHNICAL SPECIFICATIONS**

**HOUSING**

Corrosion resistant copper free aluminum with an oven-cured polyester powder coat protective finish.

**OUTLETS**

All units are supplied with four 1/2" and four 3/4" NPT knockouts located around the luminaire.

**LAMPHOLDER**

Twist lock lampholders for bipin lamps and spring loaded for HO lamps are supplied as standard ensuring positive contact and resistance to shock and vibration.

**TERMINAL BLOCK**

Equipped with a 2 pole terminal block located on an access plate for ease of installation.

**MOUNTING**

The luminaires are lay-in mounting types and supported by the "T" bar arrangement in the ceiling. Added support provided by integral support tabs.

**LAMP TYPE**

T5, T8 and T12 models us standard lamps dependent on wattage, which are not provided.

**BALLAST**

Standard luminaire equipped with a High Power Factor (HPF) 120v 60Hz ballast. 17w, 20w, 24w, 32w, 40w and 54w luminaires are rated for starting in temperatures down to -18° C (0° F) and 35w and 60w luminaires in temperatures down to -29° C (-20° F). All ballast electronic with the exception of 20w T12. Magnetic ballasts are available, please contact factory. Other voltage options and emergency ballasts also available.

**LENS AND LENS ASSEMBLY**

Supplied with a flat prismatic high impact DR acrylic lens as standard. The lens is attached to the lens frame while the frame assembly is held to the housing with a hinge arrangement which can be positioned at either side of the luminaire and is secured into position by captive knurled screws.

**ORDERING REFERENCES**

DRIP PROOF LAY-IN RECESSIBLE CEILING LUMINAIRES				
DESCRIPTION	LAMP TYPE	LAMP SIZE LBS	WEIGHT	LUMINAIRE
2 ft X 2 ft 17w	F17T8	2 x 17w	11.0	FT217
		3 x 17w	13.5	FT317
		4 x 17w	14.0	FT417
2 ft X 2 ft 20w	F20T12	2 x 20w	12.0	FT220
		3 x 20w	15.5	FT320
		4 x 20w	16.0	FT420
2 ft X 2 ft 24w	F24T5/HO	2 x 24w	11.0	FT224
		3 x 24w	13.5	FT324
		4 x 24w	14.0	FT424
2 ft X 4 ft 32w	F32T8	2 x 32w	19.5	FT232
		3 x 32w	22.0	FT332
		4 x 32w	22.5	FT432
2 ft X 2 ft 35w	F24T12	2 x 35w	16.5	FT235
		3 x 35w	25.0	FT335
		4 x 35w	25.5	FT435
2 ft X 4 ft 40w	F40T12	2 x 40w	20.5	FT240
		3 x 40w	24.0	FT340
		4 x 40w	24.5	FT440
2 ft X 4 ft 54w	F54T5/HO	2 x 54w	19.5	FT254
		3 x 54w	22.0	FT354
		4 x 54w	22.5	FT454
2 ft X 4 ft 60w	F48T12/HO	2 x 60w	25.5	FT260
		3 x 60w	34.0	FT360
		4 x 60w	34.5	FT460

SPARE PARTS	
<b>LAMP HOLDERS</b>	
Locking (17/20/32/40w)	FX4060
T5 HO (24/54w)	FX4064
Stationary (35/60w)	FX4004
Spring Loaded (35/60w)	FX4005
Set (one of each)	FX4004SET
<b>TERMINAL BLOCK</b>	
2 Pole	FX3001
4 Pole	CX3070
<b>LENS</b>	
FT 2 x 2 Ceiling Luminaire	FX2004
FT 2 x 4 Ceiling Luminaire	FX2005
<b>BALLASTS - 120VAC</b>	
1 x 17w	FX5173
2 x 17w	FX5260
1 X 20w	FX5009
2 x 20w	FX5001
1 x 24w	FX5307
2 x 24w	FX5307
1 X 32w	FX5173H
2 x 32w	FX5260H
1 X 35w	FX5100
2 x 35w	FX5027
1 X 40w	FX5011
2 x 40w	FX5004
1 x 54w	FX5305
2 x 54w	FX5305
1 X 60w	FX5027
2 x 60w	FX5027